



SOUTH CAROLINA ASSOCIATION OF NATURALISTS

SCAN

PO Box 24911
Columbia, SC 29224
www.scnaturalists.org

July 2024

"...death is a part of life, of course we all know that. That's not good, bad, right or wrong, but that's what the system is like on the third planet from the star we call the sun. And we're a part of that system, aren't we? Death is a part of life because of the recycling system that we've got. It doesn't work if death doesn't come into play."

-Rudy Mancke, November 2, 2023 (All Souls Day), NatureNotes

As our Founder stated, death is a part of life. As Naturalists, we see death constantly in nature. Sometimes it seems casual, like dead leaves on a branch, or a dead insect on the ground. It becomes more obvious to see the remains of a raccoon or a snake eating a frog. But as humans, death is the most profound when it is another human, especially someone we know and hold dear.

This past month SCAN lost two dear members, Sara Lee Simons, a charter member of SCAN, and Bob Hamlin, a long-time member. Please join me in remembering them and all the SCANners we have lost, all their naturalist contributions and great company and friendship.

Sara Lee Simons obituary: <https://www.stoudenmiredowling.com/obituary/sara-simons>

Robert Hamlin obituary: <https://www.tributearchive.com/obituaries/32217462/robert-hamlin>

Lee Morris, President

Last Month: Vereen Memorial Gardens

June found 3 hearty souls venturing out to the edge of the state in Little River, SC to Vereen Memorial Gardens. The heat and humidity were intense but thanks to the shade of the trees or the breeze along the water it was mostly bearable. We explored across the trails and boardwalks observing the insects, plants, and birds while passing by the uplands, Intracoastal Waterway, cemetery, and pond. Upon our exodus from the property we relaxed in Calabash, NC for lunch before we continued back to our homes in SC.

Todd Johnston, Eastern Regional Director

This Month: Coosawhatchie HP/WMA

This month SCAN is heading down to the southern corner of our state to check out South Carolina's newest Heritage Preserve and Wildlife Management Area, Coosawhatchie HP/WMA. This vast 12,000-acre expanse of fresh public lands straddles 36 miles of the Coosawhatchie River on the border of Hampton and Jasper counties and is home to some gorgeous Longleaf Pine sandhills that support a strong population of Gopher Tortoises. I visited the site for the first time this winter and was blown away that such a gem still exists in the heart of the Lowcountry!

SCAN is actually getting into Coosawhatchie HP/WMA the weekend before the grand public opening. So that means we've got some special logistics for this July outing. ***Please RSVP with Tom Austin*** if you plan to come to the outing. SCDNR is only allowing SCAN onto the property for the day, so we'll have to lock the gate behind us. Meaning we need to know if you plan to come, and we'll need a way to reach you the day of, so we don't lock you out or in. Tom will be waiting at the front gate to usher folks in in the morning and will lock up behind us when we depart.

Also, this is the Lowcountry in late July, meaning it's almost guaranteed to be a scorcher. So, dress for heat and bring plenty of water. Lastly, please use the GPS coordinates to find the correct gate. The address I've provided is imprecise and this new WMA isn't on google maps yet. We hope to see you there!

Tom Austin, Secretary & Southern Regional Director

Special Event: Biedler Forest Bioblitz

Audubon SC is hosting their first annual [Beidler Forest Bioblitz](#) on August 10, 2024 and SCAN is invited! If you think you would be interested in volunteering for the event as a naturalist to either provide outreach to the public or to assist with some of the more hands-on biodiversity survey work, please contact Ryan Watson with Audubon to let him know you're interested in helping or for more details. If you can't commit to volunteering, then please consider popping by to say "hi" and maybe upload an observation or ten to iNaturalist.

Tom Austin, Secretary & Southern Regional Director

Announcement: Are *your* dues paid for 2024?

Please check your membership status with SCAN to see if you might be in arrears! We recently switched over to the 2024 membership mailing list and dropped about 30 members in the process. All are showing up as having unpaid dues in our membership directory but some of whom are active members and that we've seen recently at walks! (If you didn't see the May newsletter in your email inbox, that was why.) We'll be reaching out to those members directly shortly but wanted to reiterate it here. Some folks have shown us their paid receipts for their 2024 dues already. Thus, we're using the 2023 mailing list again as we try to suss out to what extent there might have been errors somewhere with the membership directory. So, apologies and please bear with us as we sort this out!

Tom Austin, Secretary & Southern Regional Director

Vereen Memorial Gardens



Attendees: Kim McManus, Todd Johnston, and Jeff Kline

Photos from Vereen Memorial Gardens



Sand Fiddler Crab *Leptuca pugilator* (Photo: Todd J.)



Painted Bunting *Passerina ciris* (Photo: Todd J.)



Leafhopper *Eutettix pictus* (Photo: Kim M.)



Feather-legged Scoliid Wasp *Dielis plumipes*
(Photo: Kim M.)



A view of the marshes along the intracoastal waterway. (Photo: Kim M.)

Coosawhatchie HP/WMA

HAMPTON COUNTY, SC

25025 Pocotaligo Rd, Yemassee, SC 29945

32.69400, -80.92225

Saturday July 27th, 2024 - 10:30 to 4:00pm

Coosawhatchie is our state's newest Heritage Preserve and Wildlife Management Area. In fact, it's so new that it's not even open to the public yet! The grand opening is 8/1/2024. Meaning SCAN has special permission from SCDNR to access the property a week early before the masses. As both a Heritage Preserve and a WMA, Coosawhatchie is owned and will be managed by SCDNR as public land for the citizens of South Carolina. The portion of the property SCAN will be soodling through is known locally as "Buckfield", located in Hampton County.

Buckfield was combined with the adjacent "Slater" property, just over the county line in Jasper, into a massive, contiguous 12,000-acre expanse of freshly minted public lands. This landmark conservation deal was made possible by the ACE Basin Task Force with the principal work being done by its members: the Open Space Institute, The Nature Conservancy, and SCDNR. If you want to learn more about this huge conservation win for the Lowcountry, check out [this article](#) from The Nature Conservancy.

Coosawhatchie WMA is an exquisite example of a Lowcountry Longleaf Pine Sandhill ecosystem, complete with Wiregrass, Running Oak, Lupine, and even a whole mess of Gopher Tortoises! Much of the Buckfield tract is this high, dry Longleaf Pine savanna, interspersed with flatwoods and pocosins. However, towards the back of the property is the floodplain of the Coosawhatchie River. Where river meets sandhill emerge freshwater seeps merging together into freshwater streams rarely seen this deep into the Lowcountry. These seeps host a bounty of herps and birds. There are also several Native American earthworks still prominently visible round the property. Coosawhatchie truly is a spectacular site ecologically, especially for how close it is to the coast.

The roads are in pretty good shape with it being brand new and all and, being comprised mostly of coarse sand under this dry summer sun, there shouldn't be any risk of mud on the uplands, but more ground clearance in your vehicle is always advisable. Access to the property will be mostly by car. There is plenty of room in most places to pull over or diverge from the pack and lots of ground to cover if we want to split into multiple groups.

Since this is a new heritage preserve, please be mindful of SCDNR's standard ground rules and please keep the snake hooks in the car. This is a trip to the heart of the Lowcountry at the end of July, it's going to be ***HOT***. Please bring plenty of water or Gatorade for the whole day. The drought we've all been struggling with across the state should at least hold the humidity at bay and keep the bugs down. There are no restrooms on site. However, there is a Love's rest stop on I-95 about 5 miles away in Yemassee.

DIRECTIONS FROM INTERSTATE 95 - Use the GPS Coordinates: 32.69400, -80.92225

1. Take Exit 38 on I-95 at Yemassee, SC onto SC Route 68 West (*Towards Hampton*)
2. Drive 2.1 miles, then turn left onto Davidson Tower Road
3. Drive 2.5 miles, then turn left onto Pocotaligo Road
4. In 1.2 miles, the dirt road entrance will be on your right. (*Look for Tom!*)

Since we're getting special early access to the site, we have to lock ourselves in once we begin our soodle. Tom Austin, the trip leader, will be at the front gate to usher us in. Additionally, ***please RSVP with Tom*** by email at SCnaturalists76@gmail.com and provide your cell phone number, so we know you're coming and can get in touch with you the day of if needed. On that note, since we have to lock the gate behind us, **we all need to be back up by the main gate by quitting time around 4:00pm**, so Tom can close the place up.

After our walk, those of us interested in dinner will head to [Harold's Country Club](#) in Yemassee. Pickings are slim in Yemassee for good eats and Harold's is a hot spot locally. So hopefully it won't be too full up!

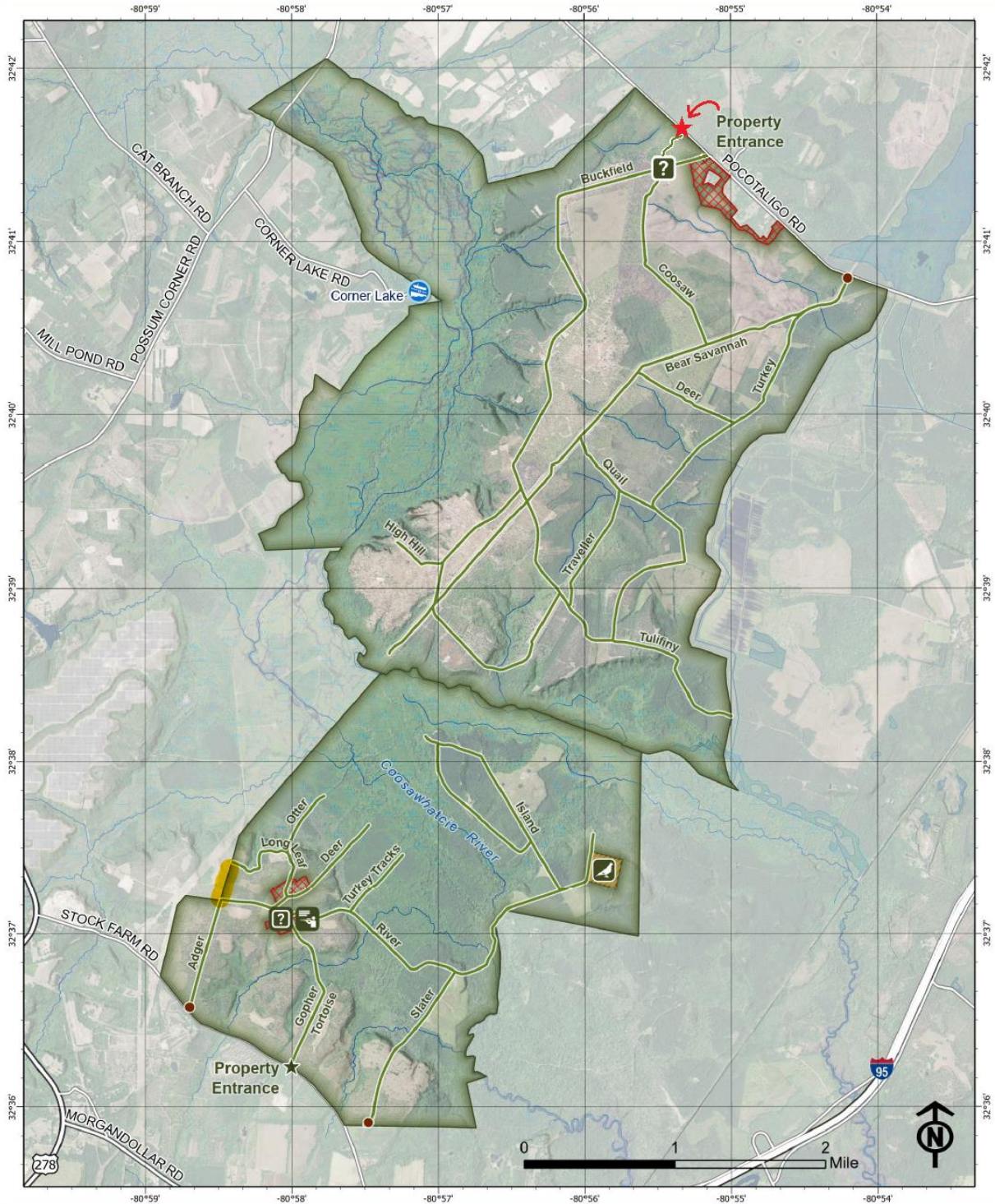
If you have question about the weekend, please contact:

Tom Austin, Southern Regional Director



COOSAWHATCHIE

Heritage Preserve and Wildlife Management Area



Legend

- Safety Zone
- Dove Management Area
- Kiosk
- Kiosk - Hunter Sign In
- Road - Vehicles Allowed
- Gate
- Public Boat Ramps



Map Updated: 7/2/2024

Hampton Plantation State Historic Site
Charleston Co., SC
May 25, 2024

This list was produced by SCAN from sightings produced by SCAN members and is subject to revision as needed. An asterisk (*) indicates a new sighting for SCAN. Send any changes or corrections to Kim McManus at scnaturalists76@gmail.com. Please indicate exactly to which flora/fauna list you are referring in the subject line of your message. Thank you.

LICHENS

Cladonia sp.
Parmotrema crinitum
Usnea strigose

FLORA

Haircap Moss

Polytrichum commune

Tree-skirt Moss

Pseudanomodon attenuatus

Japanese Climbing Fern

Lygodium japonicum

Sensitive Fern

Onoclea sensibilis

Virginia Chain Fern

Anchistea virginica

Kunth's Maiden Fern

Pelazoneuron kunthii

Marsh Fern

Thelypteris palustris pubescens

Resurrection Fern

Pleopeltis michauxiana

Longleaf Pine

Pinus palustris

Loblolly Pine

Pinus taeda

Eastern Red Cedar

Juniperus virginiana

Bald-cypress

Taxodium distichum

Lizard's-tail

Saururus cernuus

Southern Magnolia

Magnolia grandiflora

Sweetbay

Magnolia virginiana

Swamp Bay

Persea palustris

Green Arrow-arum

Peltandra virginica

Arrowhead

Sagittaria lancifolia lancifolia

Common Wild Yam

Dioscorea villosa

Catbrier

Smilax bona-nox bona-nox

Whiteleaf Greenbrier

Smilax glauca

Common Greenbrier

Smilax rotundifolia

Jackson-brier

Smilax smallii

Stargrass

Hypoxis sp.

Lawn Blue-eyed-grass

Sisyrinchium rosulatum

Field Garlic

Allium vineale

False Garlic

Nothoscordum bivalve

Dwarf Palmetto

Sabal minor

Pickerelweed

Pontederia cordata

Narrowleaf Cattail

Typha angustifolia

Common Cattail

Typha latifolia

Spanish-moss

Tillandsia usneoides

Toad Rush

Juncus bufonius

Rush

Juncus dichotomus

Soft Rush

Juncus effusus

Sallow Sedge

Carex lurida

Sedge

Carex sp.

Beaksedge

Rhynchospora sp.

Softstem Bulrush

Schoenoplectus tabernaemontani

Old-field Broomstraw

Andropogon virginicus

Lesser Quaking Grass

Briza minor

River Oats

Chasmanthium latifolium

Slender Spikegrass

Chasmanthium laxum

Longleaf Spikegrass

Chasmanthium sessiliflorum

Bermuda Grass

Cynodon dactylon

Basketgrass

Oplismenus hirtellus

Needle-leaf Witchgrass

Dichanthelium aciculare

Woolly Witchgrass

Dichanthelium acuminatum acuminatum

Variable Witchgrass

Dichanthelium commutatum

Open-flower Witchgrass

Dichanthelium laxiflorum

Velvet Witchgrass

Dichanthelium scoparium

Yard Grass

Eleusine indica

Common Eastern Wild-rye

Elymus virginicus

Centipede Grass

Eremochloa ophiuroides

Silver Plume Grass

Erianthus alopecuroides

Tall Fescue

Lolium arundinaceum

Japanese Stilt-grass

Microstegium vimineum

Bahia Grass

Paspalum notatum

Paspalum

Paspalum setaceum

Vasey Grass

Paspalum urvillei

St. Augustine Grass

Stenotaphrum secundatum

Gama Grass

Tripsacum dactyloides dactyloides

Southern Wild-rice

Zizaniopsis miliacea

Marsh Clematis

Clematis crispa

Sycamore

Platanus occidentalis

Sweet Gum

Liquidambar styraciflua

Muscadine

Muscadinia rotundifolia rotundifolia

Summer Grape

Vitis aestivalis aestivalis

Fox Grape

Vitis labrusca

Grape

Vitis sp.

Virginia-creeper

Parthenocissus quinquefolia

Peppervine

Nekemias arborea

Common Sensitive-plant

Chamaecrista nictitans nictitans

Matted Tick-trefoil
Desmodium lineatum

Milkpea
Galactia volubilis

Naked Tick-trefoil
Hylodesmum nudiflorum

Silvery Lespedeza
Lespedeza hirta hirta

Virginia Lespedeza
Lespedeza virginica

White Sweetclover
Melilotus albus

Sesban
Sesbania herbacea

Perennial Sand Bean
Strophostyles umbellata

Sprawling Hoarypea
Tephrosia hispida

Low Hop Clover
Trifolium dubium

White Clover
Trifolium repens

Korean Clover
Kummerowia stipulacea

American Wisteria
Wisteria frutescens frutescens

Chinese Wisteria
Wisteria sinensis

Showy Milkwort
Asemeia grandiflora

Wild Crabapple
Malus angustifolia

Eastern Wild Black Cherry
Prunus serotina serotina

Bradford Pear
Pyrus calleryana

Multiflora Rose
Rosa multiflora

Swamp Rose
Rosa palustris

Common Dewberry
Rubus flagellaris

Pennsylvania Blackberry
Rubus pensilvanicus

Southern Dewberry
Rubus trivialis

Southern Hackberry
Celtis laevigata

False-nettle
Boehmeria cylindrica

Sand Laurel Oak
Quercus hemisphaerica

Laurel Oak
Quercus laurifolia

Swamp Chestnut Oak
Quercus michauxii

Water Oak
Quercus nigra

Live Oak
Quercus virginiana

Common Wax-myrtle
Morella cerifera

Water Hickory
Carya aquatica

Pignut Hickory
Carya glabra

Black Walnut
Juglans nigra

Tag Alder
Alnus serrulata

River Birch
Betula nigra

Creeping Cucumber
Melothria pendula

Southern Yellow Wood-sorrel
Oxalis dillenii

St.-John's-wort
Hypericum sp.

Primrose-leaf Violet
Viola primulifolia

Common Blue Violet
Viola sororia

Yellow Passionflower
Passiflora lutea

Carolina Willow
Salix caroliniana

Popcorn Tree
Triadica sebifera

Carolina Crane's-bill
Geranium carolinianum

Seedbox
Ludwigia sp.

Cutleaf Evening-primrose
Oenothera laciniata

Winged Sumac
Rhus copallinum

Eastern Poison Ivy
Toxicodendron radicans radicans

Eastern Red Maple
Acer rubrum rubrum

Chinaberry
Melia azedarach

Savanna Hibiscus
Hibiscus aculeatus

Arrowleaf Sida
Sida rhombifolia rhombifolia

Canada Frostweed
Crocianthemum canadense

Rosemary Sunrose
Crocianthemum rosmarinifolium

Frostweed
Crocianthemum sp.

Common Shepherd's Purse
Capsella bursa-pastoris

Halberd-leaf Tearthumb
Persicaria arifolia

Red Dock
Rumex acetosella pyrenaicus

Wild Dock
Rumex hastatulus

Alligator-weed
Alternanthera philoxeroides

Prickly-pear
Opuntia mesacantha mesacantha

Water Tupelo
Nyssa aquatica

Blackgum
Nyssa sylvatica

Flowering Dogwood
Benthamidia florida

American Persimmon
Diospyros virginiana

Sweetleaf
Symplocos tinctoria

Dangleberry
Gaylussacia frondosa

Sparkleberry
Vaccinium arboreum

Southern Blueberry
Vaccinium tenellum

Buttonbush
Cephalanthus occidentalis

Cleavers
Galium aparine

Coastal Bedstraw
Galium bermudense

Three-lobed Bedstraw
Galium tinctorium

Partridge-berry
Mitchella repens

Carolina Jessamine
Gelsemium sempervirens

Eastern Anglepod
Gonolobus suberosus suberosus

Climbing Dogbane
Thyrsanthella difformis

Carolina Ponyfoot
Dichondra carolinensis

Coastal Morning-glory
Ipomoea cordatotriloba cordatotriloba

Southern Dawnflower
Stylisma humistrata

Carolina Horse-nettle
Solanum carolinense carolinense

Green Ash
Fraxinus pennsylvanica

Wild Olive
Cartrema americanum

Common Toadflax
Linaria canadensis

Carolina Wild-petunia
Ruellia caroliniensis

Trumpet-creeper
Campsis radicans

Beautyberry
Callicarpa americana

Henbit
Lamium amplexicaule amplexicaule

Eastern Horse-mint
Monarda punctata punctata

Lyreleaf Sage
Salvia lyrata

Narrowleaf Skullcap
Scutellaria integrifolia

American Holly
Ilex opaca
Yaupon
Ilex vomitoria
Venus's Looking-glass
Triodanis perfoliata
Wahlenbergia
Wahlenbergia marginata
Silverling
Baccharis halimifolia
Spanish Needles
Bidens bipinnata
Coastal Tall Thistle
Cirsium nuttallii
Mistflower
Conoclinium coelestinum
Leafy Elephant's-foot
Elephantopus carolinianus
Common Elephant's-foot
Elephantopus tomentosus
Fireweed
Erechtites hieraciifolius
Annual Fleabane
Erigeron annuus
Common Rough Fleabane
Erigeron strigosus strigosus
Common Horseweed
Erigeron canadensis
Common Dog-fennel
Eupatorium capillifolium
Late Eupatorium
Eupatorium serotinum
Carolina Goldentop
Euthamia caroliniana
American Everlasting
Gamochaeta americana
Spoonleaf Purple Everlasting
Gamochaeta purpurea
Brazilian Cat's-ear
Hypochaeris chillensis
Virginia Dwarf-dandelion
Krigia virginica
Coastal Plain Lettuce
Lactuca graminifolia graminifolia
Climbing Hempweed
Mikania scandens
Grass-leaved Golden-aster
Pityopsis graminifolia
Fragrant Rabbit-tobacco
Pseudognaphalium obtusifolium
False-dandelion
Pyrrhoppus carolinianus
Tall Goldenrod
Solidago altissima altissima
Starved Aster
Symphotrichum lateriflorum
Japanese Honeysuckle
Lonicera japonica
Centella
Centella erecta
Marsh-parsley
Cyclosporum leptophyllum

Water-hemlock
Cicuta maculata maculata
Sanicle
Sanicula canadensis
Water-parsnip
Sium suave
Black-knot
Apiosporina morbosa
Smooth Chanterelle
Cantharellus lateritius
Shelf Fungus
Ganoderma sp.
Fawn Mushroom
Pluteus cervinus
Bacterial Crown Gall
Agrobacterium radiobacter

FAUNA

Cherry Millipede
Xystodesmidae sp.
Yellow Garden Spider
Argiope aurantia
Rabid Wolf Spider
Rabidosa rabida
Chigger
Trombicula alfreddugesi
Harvestman
Opiliones sp.
Southeast Lubber Grasshopper
Romalea microptera
Short-horned Grasshopper
Acrididae sp.
Carolina Locust
Dissosteira carolina
Field Cricket
Gryllus sp.
Florida Harvester Ant
Pogonomyrmex badius
Red Imported Fire Ant
Solenopsis invicta
Carpenter Ant
Camponotus sp.
Acrobat Ant
Crematogaster sp.
Paper Wasp
Polistes sp.
Black & Yellow Mud-dauber
Sceliphron caementarium
Leaf-cutting Bee
Megachile sp.
Brown-belted Bumblebee
Bombus griseocollis
Western Honey Bee
Apis mellifera
Lovebug
Plecia nearctica
Deer Fly
Chrysops sp.
Mydas Fly
Mydas clavatus

Bee Fly
Bombylius sp.
Mosquito
Culicidae sp.
Swamp Darner
Epiaschna heros
Gray-green Clubtail
Arigomphus pallidus
Little Blue Dragonlet
Erythrodiplax minuscula
Needham's Skimmer
Libellula needhami
Great Blue Skimmer
Libellula vibrans
Blue Dasher
Pachydiplax longipennis
Carolina Saddlebags
Tramea carolina
Black Saddlebags
Tramea lacerata
Blue-tipped Dancer
Argia tibialis
Soldier Beetle
Chauliognathus marginatus
Multicolored Asian Lady Beetle
Harmonia axyridis
Pipevine Swallowtail
Battus philenor
Black Swallowtail
Papilio polyxenes
Red-banded Hairstreak
Calycopis cecrops
Gray Hairstreak
Strymon melinus
Eastern Tailed-blue
Cupido comyntas
Summer Azure
Celastrina neglecta
Azure Butterfly
Celastrina sp.
Pearl Crescent
Phyciodes tharos
American Lady
Vanessa virginianensis
Painted Lady
Vanessa cardui
Horace's Duskywing
Erynnis horatius
Least Skipper
Ancyloxypha numitor
Southern Broken-Dash
Wallengrenia otho
Broad-winged Skipper
Poanes viator
Large Lace-border Moth
Scopula limboundata enucleata
Salt Marsh Moth
Estigmene acrea
Virginian Tiger Moth
Spilosoma virginica
Litter Moth
Renia sp.

Mummichog
Fundulus heteroclitus
Eastern Mosquitofish
Gambusia holbrooki
Bream
Lepomis sp.
Southern Toad
Anaxyrus terrestris
Cope's Gray Treefrog
Hyla chrysoscelis
Green Treefrog
Hyla cinerea
Pine Woods Treefrog
Hyla femoralis
Bronze Frog
Lithobates clamitans clamitans
Green Anole
Anolis carolinensis
Green Heron
Butorides virescens
Wood Stork
Mycteria americana
Laughing Gull
Leucophaeus atricilla
Turkey Vulture
Cathartes aura
Mississippi Kite
Ictinia mississippiensis
Swallow-tailed Kite
Elanoides forficatus
Yellow-billed Cuckoo
Coccyzus americanus
Chimney Swift
Chaetura pelagica
Red-bellied Woodpecker
Melanerpes carolinus
Red-headed Woodpecker
Melanerpes erythrocephalus

Downy Woodpecker
Dryobates pubescens
Pileated Woodpecker
Dryocopus pileatus
Great Crested Flycatcher
Myiarchus crinitus
Eastern Wood-pewee
Contopus virens
Barn Swallow
Hirundo rustica
Blue Jay
Cyanocitta cristata
American Crow
Corvus brachyrhynchos
Fish Crow
Corvus ossifragus
Tufted Titmouse
Baeolophus bicolor
Carolina Chickadee
Poecile carolinensis
White-breasted Nuthatch
Sitta carolinensis
Brown-headed Nuthatch
Sitta pusilla
Carolina Wren
Thryothorus ludovicianus
Blue-gray Gnatcatcher
Poliophtila caerulea
Eastern Bluebird
Sialia sialis
Northern Mockingbird
Mimus polyglottos
White-eyed Vireo
Vireo griseus
Prothonotary Warbler
Protonotaria citrea
Northern Parula
Setophaga americana

Yellow-throated Warbler
Setophaga dominica
Pine Warbler
Setophaga pinus
Common Yellowthroat
Geothlypis trichas
Northern Cardinal
Cardinalis cardinalis
Blue Grosbeak
Passerina caerulea
Red-winged Blackbird
Agelaius phoeniceus
Brown-headed Cowbird
Molothrus ater
Summer Tanager
Piranga rubra

NEW SPECIES

Buffalo Clover
Trifolium reflexum
Burnt-orange Bolete
Tylopilus balloui
Corticoid Fungus
Family Stereaceae, Species of
Florida Beggarweed
Desmodium tortuosum
Georgia Frostweed
Crocantemum georgianum
Marsh Tickseed
Bidens trichosperma
Peck's Yellow Dust Amanita
Amanita elongata
Poison Ivy Leaf Mite
Aculops rhois
Wrinkled Bolete
Leccinellum rugosiceps
Xylobolus False Turkey-tail
Xylobolus subpileatus

Francis Marion National Forest
Berkeley Co., SC
May 23, 2024

This list was produced by SCAN from sightings produced by SCAN members and is subject to revision as needed. An asterisk (*) indicates a new sighting for SCAN. Send any changes or corrections to Kim McManus at scnaturalists76@gmail.com. Please indicate exactly to which flora/fauna list you are referring in the subject line of your message. Thank you.

LICHENS

Cladonia sp.

FLORA

Foxtail Clubmoss

Lycopodiella alopecuroides

American Royal Fern

Osmunda spectabilis

Japanese Climbing Fern

Lygodium japonicum

Sensitive Fern

Onoclea sensibilis

Virginia Chain Fern

Anchistea virginica

Marsh Fern

Thelypteris palustris pubescens

Longleaf Pine

Pinus palustris

Loblolly Pine

Pinus taeda

Pine

Pinus sp.

Pond-cypress

Taxodium ascendens

Bald-cypress

Taxodium distichum

White Water-lily

Nymphaea odorata odorata

Lizard's-tail

Saururus cernuus

Sweetbay

Magnolia virginiana

Swamp Bay

Persea palustris

Arrowhead

Sagittaria graminea

Northern White Colic-root

Aletris farinosa

Catbrier

Smilax bona-nox bona-nox

Greenbrier

Smilax sp.

Common Grass-pink

Calopogon tuberosus tuberosus

Rose Pogonia

Pogonia ophioglossoides

Shadow Witch

Ponthieva racemosa

Ladies'-tresses

Spiranthes sp.

Large Spreading Pogonia

Cleistesiospis divaricata

Savanna Iris

Iris tridentata

Southern Blue Flag

Iris virginica

Gladiolus

Gladiolus sp.

Eastern Agave

Agave virginica

Virginia Dayflower

Commelina virginica

Pickerelweed

Pontederia cordata

Redroot

Lachnanthes caroliniana

Common Cattail

Typha latifolia

Common Ten-angled Pipewort

*Eriocaulon decangulare
decangulare*

Common Bogbutton

Lachnocaulon anceps

Bogbuttons

Lachnocaulon sp.

Soft Rush

Juncus effusus

Rush

Juncus sp.

Warty Sedge

Carex verrucosa

Sedge

Carex sp.

Umbrella Sedge

Cyperus sp.

Narrowleaf Whitetop Sedge

Rhynchospora colorata

Fascicled Beaksedge

Rhynchospora fascicularis

Dryland White Bluestem

Andropogon capillipes

Old-field Broomstraw

Andropogon virginicus

Switch Cane

Arundinaria tecta

Toothache Grass

Ctenium aromaticum

Centipede Grass

Eremochloa ophiuroides

Sugarcane Plume Grass

Erianthus giganteus

Maidencane

Hymenachne hemitoma

Gama Grass

Tripsacum dactyloides dactyloides

Coralbeads

Nephroia carolina

Sweet Gum

Liquidambar styraciflua

Feathery Mermaid-weed

Proserpinaca pectinata

Virginia-creeper

Parthenocissus quinquefolia

Peppervine

Nekemias arborea

Tall Indigo-bush

Amorpha fruticosa

Dwarf Indigo-bush

Amorpha herbacea herbacea

Common Sensitive-plant

Chamaecrista nictitans nictitans

Butterfly Pea

Clitoria mariana mariana

Low Rattlebox

Crotalaria rotundifolia

Rattlebox

Crotalaria sp.

Tick-trefoil

*Desmodium paniculatum
paniculatum*

Milkpea

Galactia sp.

Carolina Indigo

Indigofera caroliniana

Sericea Lespedeza

Lespedeza cuneata

Eastern Sensitive-briar

Mimosa microphylla

Eastern Sampson's-snakeroot

Orbexilum psoraliioides

Dollarweed

Rhynchosia reniformis

Erect Snoutbean

Rhynchosia tomentosa

Virginia Goat's-rue

Tephrosia virginiana

Goat's-rue

Tephrosia sp.

Korean Clover

Kummerowia stipulacea

Tall Pinebarren Milkwort

Polygala cymosa

Orange Milkwort

Polygala lutea

Maryland Milkwort

Polygala mariana

Milkwort

Polygala sp.

Showy Milkwort

Asemeia grandiflora

Eastern Wild Black Cherry

Prunus serotina serotina

Swamp Rose
Rosa palustris

Rose
Rosa sp.

Common Chinquapin
Castanea pumila

Southern Red Oak
Quercus falcata

Water Oak
Quercus nigra

Cherrybark Oak
Quercus pagoda

Willow Oak
Quercus phellos

Live Oak
Quercus virginiana

Common Wax-myrtle
Morella cerifera

Peelbark St.-John's-wort
Hypericum fasciculatum

St.-John's-wort
Hypericum sp.

Passionflower
Passiflora incarnata

Flax
Linum sp.

Tread-softly
Cnidioscolus stimulosus

White Sandhills Spurge
Euphorbia curtisii

Southeastern Flowering Spurge
Euphorbia pubentissima

Queen's-delight
Stillingia sylvatica

Sundrops
Oenothera fruticosa

Evening-primrose
Oenothera sp.

Yellow Meadow-beauty
Rhexia lutea

White Meadowbeauty
Rhexia mariana exalbida

Winged Sumac
Rhus copallinum

Poison Oak
Toxicodendron pubescens

Eastern Poison Ivy
Toxicodendron radicans radicans

Eastern Red Maple
Acer rubrum rubrum

Eastern Rose-mallow
Hibiscus moscheutos

Water Sundew
Drosera intermedia

Water Tupelo
Nyssa aquatica

Blackgum
Nyssa sylvatica

Carolina Phlox
Phlox carolina

Phlox
Phlox sp.

American Persimmon
Diospyros virginiana

Yellow Pitcherplant
Sarracenia flava

Hooded Pitcherplant
Sarracenia minor minor

Pitcherplant
Sarracenia sp.

Ti-ti
Cyrilla racemiflora

Maleberry
Lyonia ligustrina

Buttonbush
Cephalanthus occidentalis

Coastal Rose-pink
Sabatia calycina

White Sabatia
Sabatia difformis

Sabatia
Sabatia sp.

Indian-hemp
Apocynum cannabinum

Clasping Milkweed
Asclepias amplexicaulis

Few-flower Milkweed
Asclepias lanceolata

Savanna Milkweed
Asclepias longifolia

Swamp-forest Milkweed
Asclepias perennis

Purple Savanna Milkweed
Asclepias rubra

Butterfly-weed
Asclepias tuberosa

Eastern Anglepod
Gonolobus suberosus suberosus

Wild Sweet Potato
Ipomoea pandurata

Common Dawnflower
Stylisma patens

Carolina Horse-nettle
Solanum carolinense carolinense

Chinese Privet
Ligustrum sinense

Blue Water-hyssop
Bacopa caroliniana

Eastern Smooth Beardtongue
Penstemon laevigatus

English Plantain
Plantago lanceolata

Broad-leaved Plantain
Plantago rugelii

Carolina Wild-petunia
Ruellia caroliniensis

Cross-vine
Bignonia capreolata

Purple Bladderwort
Utricularia purpurea

Floating Bladderwort
Utricularia radiata

Brazilian Vervain
Verbena brasiliensis

Beautyberry
Callicarpa americana

Cluster Bushmint
Hyptis alata alata

Self-heal
Prunella vulgaris

Savanna Mountain-mint
Pycnanthemum flexuosum

Lyreleaf Sage
Salvia lyrata

Narrowleaf Skullcap
Scutellaria integrifolia

American Holly
Ilex opaca

Holly
Ilex sp.

Nuttall's Lobelia
Lobelia nuttallii

Silver Seaside Oxeye
Borrchia frutescens

Sunbonnets
Chaptalia tomentosa

Cottonleaf Golden-aster
Chrysopsis gossypina

Common Yellow Thistle
Cirsium horridulum horridulum

Sandhill Thistle
Cirsium repandum

Pool Coreopsis
Coreopsis falcata

Coreopsis
Coreopsis sp.

Fireweed
Erechtites hieraciifolius

Oak-leaved Fleabane
Erigeron quercifolius

Common Rough Fleabane
Erigeron strigosus strigosus

Whitetop Fleabane
Erigeron vernus

Daisy Fleabane
Erigeron sp.

Common Dog-fennel
Eupatorium capillifolium

Coastal Dog-fennel
Eupatorium compositifolium

American Everlasting
Gamochaeta americana

Spoonleaf Purple Everlasting
Gamochaeta purpurea

Cudweed
Gamochaeta sp.

Grass-leaved Golden-aster
Pityopsis graminifolia

Rose Fleabane
Pluchea baccharis

Blackroot
Pterocaulon pycnostachyum

False-dandelion
Pyrrhopappus carolinianus

Black-eyed Susan
Rudbeckia hirta

Rosinweed*Silphium asteriscus***Bearsfoot***Smallanthus uvedalia***American Aster***Symphotrichum walteri***Wingstem***Verbesina* sp.**Sandhill Ironweed***Vernonia angustifolia***Common Elderberry***Sambucus canadensis***Devil's-walking-stick***Aralia spinosa***Rattlesnake-master***Eryngium yuccifolium***FAUNA****Southern Black Widow***Latrodectus mactans***Yellow Garden Spider***Argiope aurantia***Lined Orbweaver***Mangora gibberosa***Golden Silk Orbweaver***Trichonephila clavipes***Grass Spider***Agelenopsis* sp.**Six-spotted Fishing Spider***Dolomedes triton***Nursery Web Spider***Pisaurina mira***Wolf Spider***Lycosa* sp.**Wolf Spider***Lycosidae* family**Magnolia Green Jumper***Lyssomanes viridis***Brilliant Jumper***Phidippus clarus***American Dog Tick***Dermacentor variabilis***Lone Star Tick***Amblyomma americanum***Gulf Coast Tick***Amblyomma maculatum***Short-winged Green Grasshopper***Dichromorpha viridis***Brown Winter Grasshopper***Amblytropidia mysteca***Spur-throated Grasshopper***Melanoplus* sp.**American Bird Grasshopper***Schistocerca americana***Mischievous Bird Grasshopper***Schistocerca damnifica***Round-winged Katydid***Amblycorypha oblongifolia***Katydid***Amblycorypha* sp.**Bush Katydid***Scudderia* sp.**Meadow Katydid***Conocephalus* sp.**Restless Bush Cricket***Hapithus agitator***Chinese Mantid***Tenodera aridifolia sinensis***Largid Bug***Largus succinctus***Leafhopper**

Family Cicadellidae, Species of

Red Bay Gall Psyllid*Trioza magnoliae***Green Lacewing***Chrysoperla* sp.**Red Imported Fire Ant***Solenopsis invicta***Red Carpenter Ant***Camponotus castaneus***Bald-faced Hornet***Dolichovespula maculata***Paper Wasp***Polistes* sp.**Pipe-organ Wasp***Trypoxylon politum***Bumblebee***Bombus impatiens***Bumblebee***Bombus* sp.**Western Honey Bee***Apis mellifera***Yellow Fly***Diachlorus ferrugatus***Robber Fly**

Family Asilidae, Species of

Long-legged Fly

Family Dolichopodidae

Eastern Pondhawk*Erythemis simplicicollis***Little Blue Dragonlet***Erythrodiplax minuscula***Bar-winged Skimmer***Libellula axilena***Slaty Skimmer***Libellula incesta***Painted Skimmer***Libellula semifasciata***Great Blue Skimmer***Libellula vibrans***Blue Dasher***Pachydiplax longipennis***Common Whitetail***Plathemis lydia***Ebony Jewelwing***Calopteryx maculata***Slender Spreadwing***Lestes rectangularis***Duckweed Firetail***Telebasis byersi***Predacious Diving Beetle***Hydaticus bimarginatus***Rove Beetle**

Staphylinidae, unidentified

Scarab Beetle*Deltochilum gibbosum gibbosum***Garden Scarab Beetle***Diplotaxis* sp.**Shining Leaf Chafer***Anomala marginata***Spotted Pelidnota***Pelidnota punctata***Flat-headed Baldcypress Borer***Acmaeodera pulchella***Blind Elater***Alaus myops***Firefly; Lightning Beetle***Photuris* sp.**Tile-horned Longhorn Beetle***Prionus imbricornis***Longhorn Beetle***Smolicum cucujiforme***Round-necked Longhorn Beetle***Elaphidion mucronatum***Short-horned Leaf Beetle***Anomoea laticlivia laticlivia***Pipevine Swallowtail***Battus philenor***Eastern Tiger Swallowtail***Pterourus glaucus***Palamedes Swallowtail***Pterourus palamedes***Azure Butterfly***Celastrina* sp.**Pearl Crescent***Phyciodes tharos***Red Admiral***Vanessa atalanta***Common Buckeye***Junonia coenia***Georgia Satyr***Neonympha areolatus***Monarch***Danaus plexippus***Duskywing Skipper***Erynnis* sp.**Swarthy Skipper***Nastra lherminier***Spiny Oak-slug Moth***Euclea delphinii***Grape Leaffolder Moth***Desmia funeralis***Confused Eusarca Moth***Eusarca confusaria***Common Eupithecia Moth***Eupithecia miserulata***Hummingbird Clearwing Moth***Hemaris thysbe***Ornate Bella Moth***Utetheisa ornatrix***Fall Webworm Moth***Hyphantria cunea***Definite Tussock Moth***Orgyia definita***Pitcherplant Moth***Exyra semicrocea*

Four-spotted Fungus Moth*Metalectra quadrisignata***Agreeable Tiger Moth***Spilosoma congrua***Eastern Mosquitofish***Gambusia holbrooki***Dwarf Salamander***Eurycea quadridigitata***Southern Toad***Anaxyrus terrestris***Eastern Narrow-mouthed Toad***Gastrophryne carolinensis***Southern Cricket Frog***Acris gryllus***Cope's Gray Treefrog***Hyla chrysoscelis***Green Treefrog***Hyla cinerea***Pine Woods Treefrog***Hyla femoralis***Ornate Chorus Frog***Pseudacris ornata***American Bullfrog***Lithobates catesbiana***Green Frog***Lithobates clamitans***Bronze Frog***Lithobates clamitans clamitans***American Alligator***Alligator mississippiensis***Common Snapping Turtle***Chelydra serpentina***Eastern Box Turtle***Terrapene carolina***Eastern Mud Turtle***Kinosternon subrubrum***Mud Turtle***Kinosternon sp.***Eastern Musk Turtle***Sternotherus odoratus***Green Anole***Anolis carolinensis***Slender Glass Lizard***Ophisaurus attenuatus***Eastern Glass Lizard***Ophisaurus ventralis***Black Racer***Coluber constrictor***Eastern Ratsnake***Pantherophis alleghaniensis***Red-bellied Snake***Storeria occipitomaculata***Eastern Garter Snake***Thamnophis sirtalis***Copperhead***Agkistrodon contortrix***Cottonmouth***Agkistrodon piscivorus***Timber Rattlesnake***Crotalus horridus***Tricolored Heron***Egretta tricolor***Snowy Egret***Egretta thula***Great Blue Heron***Ardea herodias***Great Egret***Ardea alba***Laughing Gull***Leucophaeus atricilla***Gull-billed Tern***Gelochelidon nilotica***Black Skimmer***Rhynchops niger***Swallow-tailed Kite***Elanoides forficatus***Wild Turkey***Meleagris gallopavo***Mourning Dove***Zenaida macroura***Barred Owl***Strix varia***Chimney Swift***Chaetura pelagica***Pileated Woodpecker***Dryocopus pileatus***Prothonotary Warbler***Protonotaria citrea***Hooded Warbler***Setophaga citrina***Prairie Warbler***Setophaga discolor***Common Yellowthroat***Geothlypis trichas***Summer Tanager***Piranga rubra***NEW SPECIES****Blurry Chocolate Angle***Macaria transitaria***Carpenterworm Moth***Prionoxystus robiniae***Checked Apogeshna Moth***Apogeshna stenialis***Cherry Millipedes***Family Xystodesmidae, Species of***Common Hedge Parsley***Torilis arvensis***Coppery Leafhopper***Jikradia olitoria***Coverdale's Anacamptis Moth***Anacamptis coverdalella***Dark Wood Cockroach***Ischnoptera deropeltiformis***Draparnaud's Glass Snail***Oxychilus draparnaudi***Dusky Raisin Moth***Ephesiodes gilvescentella***Eastern Grass Tubeworm Moth***Acrolophus plumifrontella***Epiblema mandana (moth)***Epiblema mandana***Fervid Plagodis Moth***Plagodis fervidaria***Gaping panicgrasses, lax panicgrasses and allies***Steinchisma sp.***Garden Tortrix***Clepsis peritana***Giant Mayfly***Hexagenia limbata***Green Burgundy Stink Bug***Banasa dimidiata***Harper's Pitcher Plant***Sarracenia x harperi***Hedge Parsley***Torilis sp.***Leafhopper***Heliria cornutula***Julia's Idia Moth***Idia julia***Labyrinth Moth***Phaecasiophora niveiguttana***Large Maple Spanworm Moth***Prochoerodes lineola***Leafhopper***Sanctanus cruciatus***Lesser Grapevine Looper Moth***Eulithis diversilineata***Lincoln Underwing***Catocala lincolnana***Metric Paper Wasp***Polistes metricus***Peeling Puffball***Lycoperdon marginatum***Rough-coated Long-horned Beetle***Ecyrus dasycerus***Sharp-headed Sharpshooter***Draeculacephala robinsoni***Six-speckled Nursery Web Spider***Astylopsis sexguttata***Slender Nursery Web Spider***Pisaurina undulata***Small Necklace Moth***Hypsoropha hormos***Small Yellow Cockroach***Cariblatta lutea***Traveling Cherry Millipede***Pleurolooma flavipes***Turf Running Spider***Philodromus cespitum***Ultronia Underwing***Catocala Ultronia***Walsingham's Grass Tubeworm Moth***Acrolophus propinqua***Waved Light Fly***Pyrgota undata***Wax Myrtle Wave***Cyclophora myrtilaria*

Vereen Memorial Gardens
Horry Co., SC
June 22, 2024

This list was produced by SCAN from sightings produced by SCAN members and is subject to revision as needed. An asterisk (*) indicates a new sighting for SCAN. Send any changes or corrections to Kim McManus at scnaturalists76@gmail.com. Please indicate exactly to which flora/fauna list you are referring in the subject line of your message. Thank you.

FLORA

Loblolly Pine

Pinus taeda

Red Bay

Persea borbonia

Sassafras

Sassafras albidum

Jackson-brier

Smilax smallii

Narrowleaf Whitetop Sedge

Rhynchospora colorata

Pampasgrass

Cortaderia selloana

Sweet Gum

Liquidambar styraciflua

Summer Grape

Vitis aestivalis aestivalis

Virginia-creeper

Parthenocissus quinquefolia

Red Mulberry

Morus rubra

White Oak

Quercus alba

Water Oak

Quercus nigra

Oak

Quercus sp.

Common Wax-myrtle

Morella cerifera

Hickory

Carya sp.

Tread-softly

Cnidioscolus stimulosus

Eastern Poison Ivy

Toxicodendron radicans radicans

Eastern Red Maple

Acer rubrum rubrum

American Persimmon

Diospyros virginiana

Sweetleaf

Symplocos tinctoria

Pipsissewa

Chimaphila maculata

Partridge-berry

Mitchella repens

Carolina Wild-petunia

Ruellia caroliniensis

Cross-vine

Bignonia capreolata

American Holly

Ilex opaca

Silver Seaside Oxeye

Borrchia frutescens

Elephant's-foot

Elephantopus sp.

Southern Maritime Marsh-elder

Iva frutescens frutescens

Japanese Honeysuckle

Lonicera japonica

FAUNA

Crab-shaped Spiny-back

Gasteracantha cancriformis

Spiny-backed Spider

Micrathena gracilis

Orchard Orbweaver

Leucauge venusta

Golden Silk Orbweaver

Trichonephila clavipes

Squareback Marsh Crab

Armases cinereum

Atlantic Sand Fiddler Crab

Leptuca pugilator

Largid Bug

Largus succinctus

Feather-legged Scoliid Wasp

Campsomeris plumipes

Carpenter-mimic Leafcutter

Megachile xylocopoides

Great Blue Skimmer

Libellula vibrans

Palamedes Swallowtail

Pterourus palamedes

Grapeleaf Skeletonizer Moth (larva)

Harrisina americana

Five-lined or SE 5-lined Skink

Plestiodon sp.

Ground Skink

Scincella lateralis

Green Heron

Butorides virescens

Snowy Egret

Egretta thula

Great Blue Heron

Ardea herodias

Laughing Gull

Leucophaeus atricilla

Mourning Dove

Zenaida macroura

Downy Woodpecker

Dryobates pubescens

Great Crested Flycatcher

Myiarchus crinitus

Blue Jay

Cyanocitta cristata

American Crow

Corvus brachyrhynchos

Tufted Titmouse

Baeolophus bicolor

Carolina Chickadee

Poecile carolinensis

Carolina Wren

Thryothorus ludovicianus

Eastern Bluebird

Sialia sialis

Painted Bunting

Passerina ciris

Eastern Gray Squirrel

Sciurus carolinensis

NEW SPECIES

Harvestman

Leiobunum uxorium

Lauxaniidae Fly

Neogriphoneura sordida

Leafhopper

Eutettix pictus

Mud Fiddler Crab

Minuca pugnax

Spider Wasp

Psorthaspis legata

Thread-waisted Wasp

Podium luctuosum