



SOUTH CAROLINA ASSOCIATION OF NATURALISTS

SCAN

PO Box 24911
Columbia, SC 29224
www.scnaturalists.org

September, 2024

Welcome to September and to Autumn!

Last month's trip was a lovely excursion to the mountains of North Carolina. Different views, different biota, and different weather. Much thanks to everyone who helped organize this trip! We are reversing direction for this month – we are traveling to the coastal plain to check out Samworth WMA. Samworth sports a diversity of communities which will hopefully lead to sightings of many species... and dare I say it? Possibly migrating birds? Please read Tom Austin's blurb on last month's trip (with photos) and Todd Johnston's scouting report for this month's exciting trip below for more details on both trips.

In other news, we are beginning to plan the annual meeting for January 25, 2025. We have secured the River Center at Saluda Shoals Park – *this is not the auditorium*. The auditorium is no longer, as it is being converted to office spaces. (No more sore arses at least!) We will have tables available, which should make the meeting more sociable, and padded chairs, which should make it more comfortable. There is also a kitchen, so we plan on the typical morning nibbles and coffee, but would also like to introduce a lunchtime potluck. Unfortunately, this will not be like it once was going over to Jan's house and having a super sociable potluck there, but should still be fun and we can take the food into the event space or sit outside to eat if it is not raining or freezing cold. I invite everybody to start thinking about what you want to bring!

As always, we will have a number of speakers at the annual meeting. We have a list of potential speakers but would love if anyone has any suggestions. We are also soliciting ideas for monthly trips for 2025 – where do YOU want to go? If you have specific suggestions, please email me.

Lee Morris, President

Last Month: Devil's Courthouse in Pisgah National Forest

Last month we escaped the confines of our natal state to gallivant in the hinterlands of the North Carolina mountains. Although we convened at the Devil's Courthouse Overlook, the group scattered up and down the Blue Ridge Parkway to explore a great number of both local landmarks and hidden gems within Pisgah National Forest. The views were jaw dropping, the weather exquisite for August, and the hills were filled with countless flora and fauna scarcely seen in South Carolina. We snaked our way down the Parkway and the switchback of HWY-276 to Brevard for dinner at Ecusta Brewing. A few of us camped overnight at the Mount Pisgah Campground beneath the subtle glow of the Milky Way, and arose early with the cool mountain air the following day to hike to the top of Black Balsam Knob and eek out another wonderful day away from the heat of our home state.

Tom Austin, Secretary & Southern Regional Director

This Month: Samworth WMA

This Month we're headed to the Eastern Region to explore Samworth WMA in Georgetown County, where the Great Pee Dee River meets the Waccamaw River, just above Winyah Bay. Although Samworth is home to a great many managed rice impoundments none are accessible by land. So instead, we'll be appreciating the uplands and pines of its 3 miles of nature trails. Please be advised, it's now open deer season in game zone 4. That means **BLAZE ORANGE** when out on public hunting lands like Samworth WMA. So don't forget to bring your most stylish orange hat!

Tom Austin, Secretary & Southern Regional Director

2025 Field Trip Planning Meeting: 11/13/2024 @7pm

Mark your calendars for November 13th, 2024 at 7:00pm. That's going to be the date of our planning meeting to set the field trip schedule for 2025. The meeting will be held virtually and we'll send out the meeting details in the October newsletter next month. So, as you ramble through the Palmetto State this month and the next, please be thinking of where you want SCAN to go next year. If you can't attend on 11/13, please send your field trip recommendations in for discussion during the meeting!

Tom Austin, Secretary & Southern Regional Director

Photos from Pisgah National Forest



Attendees: Barbara Foster, Carson Johnson, Scott Wietecha, Tom Jones, Greg Ross, Tom Austin, Dave Kastner, Alison Smith, Grady Nance, Marty Kastner, Jerry Bright, Mary Jones, Lee Morris, Jim Welch, Kim McManus



The "Vertical Bog" at the Wolf Mountain Overlook.
[Photo: Tom A.]



Parnassia Miner Bee (*Andrena parnassiae*) on
Kidney-leaved Grass of Parnassus (*Parnassia asarifolia*)
[Photo: Tom A.]



The Devil's Courthouse
[Photo: Tom A.]



Hiking into the Middle Prong Wilderness
[Photo: Tom A.]



A stream cuts beneath Rhododendrons and over rocks
[Photo: Tom A.]



Southern Blackbelly Salamander (*Desmognathus amphileucus*)
[Photo: Tom A.]



Beechdrops (*Epifagus virginiana*)
[Photo: Tom A.]



Sumo Mite (*Allothrombium* sp.)
[Photo: Tom A.]



Greg Ross at the summit of Black Balsam Knob
[Photo: Tom A.]



Common Raven (*Corvus corax*)
[Photo: Tom A.]



Mountain Ash (*Sorbus americana*) in fruit,
in the foreground of Sam Knob
[Photo: Tom A.]



Common Eastern Bumble Bee (*Bombus impatiens*) on
Roan Mountain Goldenrod (*Solidago roanensis*)
[Photo: Tom A.]

Samworth WMA

GEORGETOWN COUNTY, SC

230 Dirleton Rd, Georgetown, SC 29440

33.4743990, -79.1871230

Saturday September 28,2024 at 10:30am

After our adventure in the mountains last month, it's time to relax along the creeks of the Great Pee Dee River for our September outing at Samworth Wildlife Management Area. These lands are in Georgetown County and are managed by the SC Department of Natural Resources (SCDNR). The initial donation of 500 acres was by Thomas G. Samworth in 1962 to the state of South Carolina to be used for hunting. Samworth WMA is now close to 1,600 acres, split between 1,300 acres of wetland impoundments (tidal freshwater), 88 acres of longleaf pine, and 200 acres of agricultural fields and uplands. Although much of the property is only accessible by boat, we will be exploring a nearly 3-mile nature loop. Highlights are one of the impoundments, a pond, pine forests, and managed food plots.

Pending any additional rainfall this area could be pretty buggy but nothing we haven't dealt with before. There are no restrooms on site so plan ahead to stop at the public restroom in Georgetown or locate a green latrine off the trail. A lot of the trail was open so bring some sun protection if it's looking to be a cloudless sky. They do have water access if anyone wants to go for a paddle, however you must view much of the nature from your boat as parts of the grounds are off limits to foot travel.

It's deer hunting season in game zone 4. So, we're all required to **BLAZE ORANGE** while on the property. So don't forget your orange hat or vest!

Directions from Georgetown:

Travel 15 miles north on US Highway 701. Once crossing the Black River, turn right onto SC-S-22-4(Choppee RD)/SC-S-22-52(Plantersville RD) and travel approximately 6 miles. Then turn right onto Samworth Loop Road. Follow the road to the stop sign and turn left. Travel about 300 feet and turn right onto Dirleton Road where there will be remnants of a brick entry area. Continue to the end of the road where the boat ramp is and park in the grass. Try to leave the area directly across from the boat ramp open for the trucks and trailers.

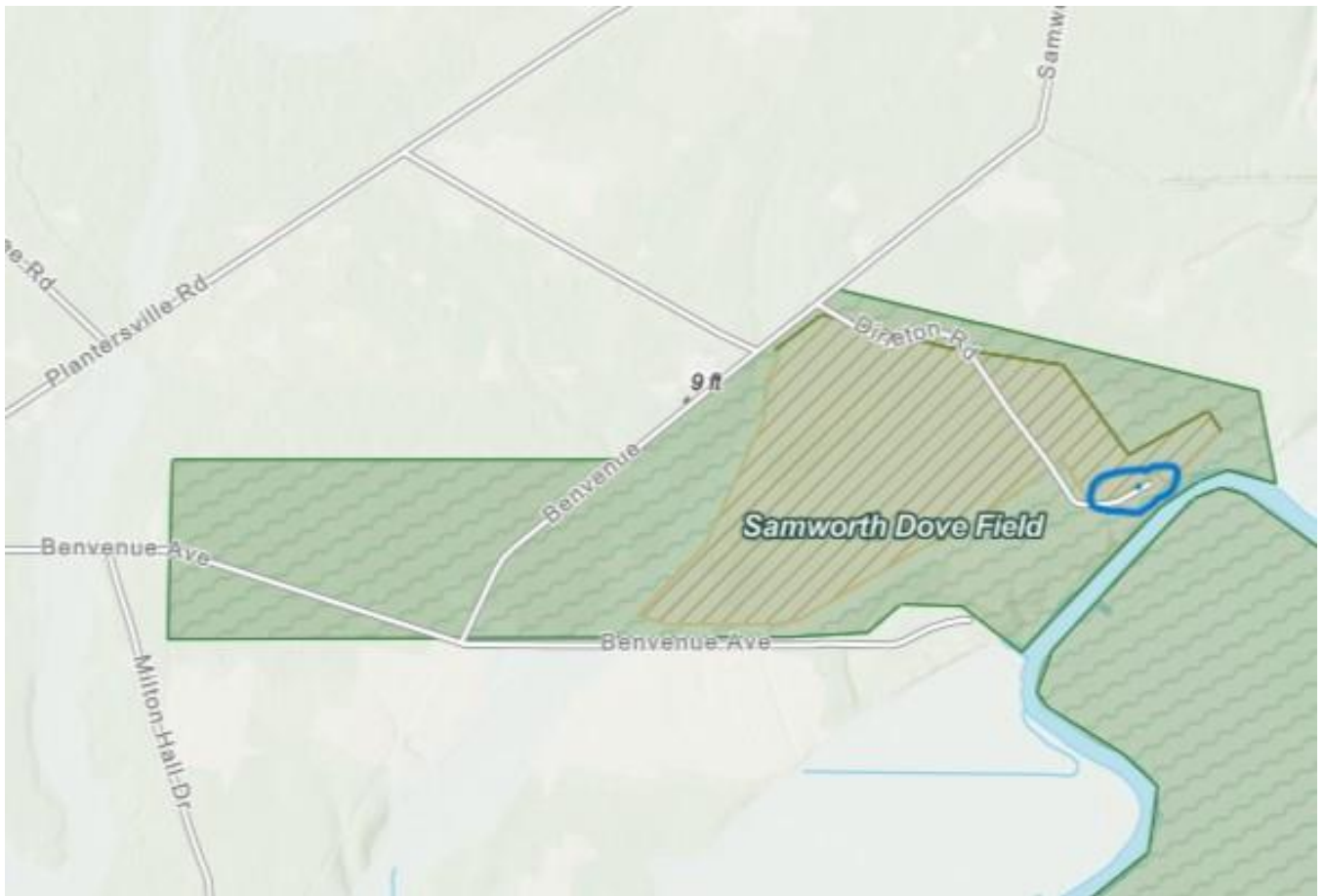
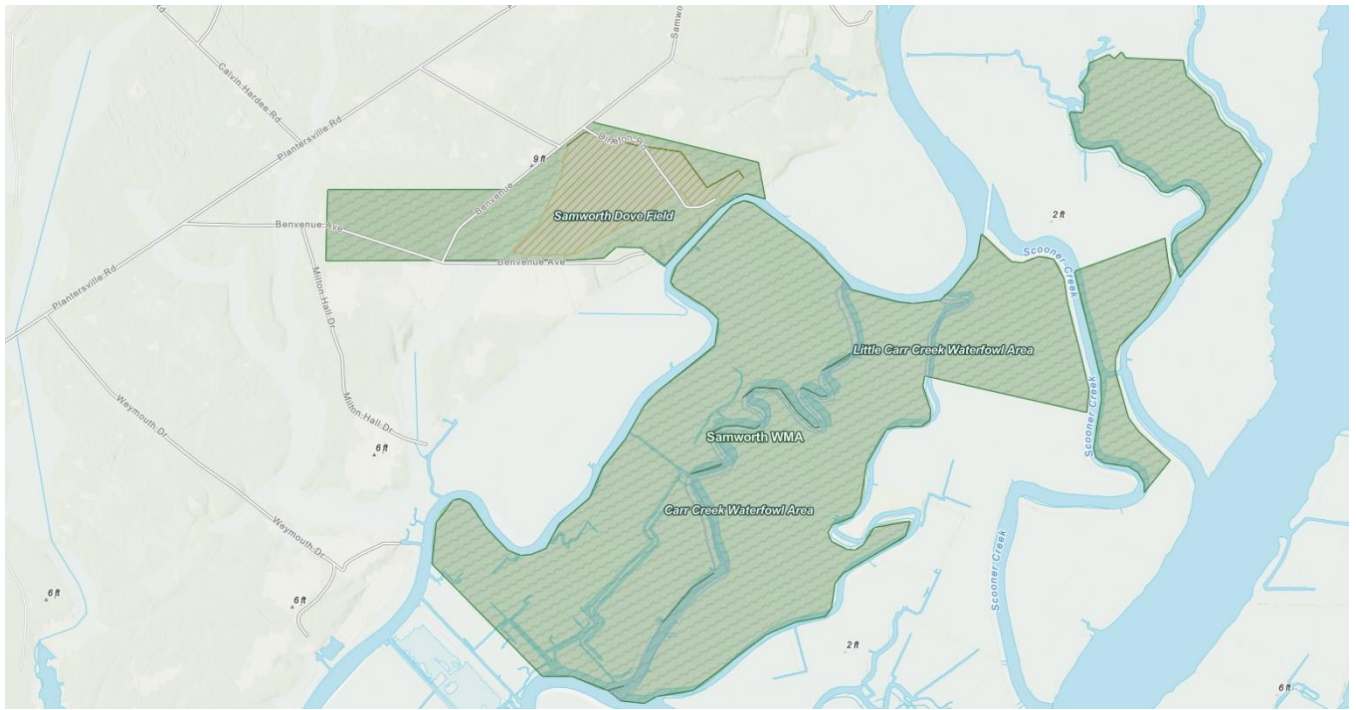
After the hike we can discuss food options in nearby Georgetown, SC for those of us who want to meet for dinner.

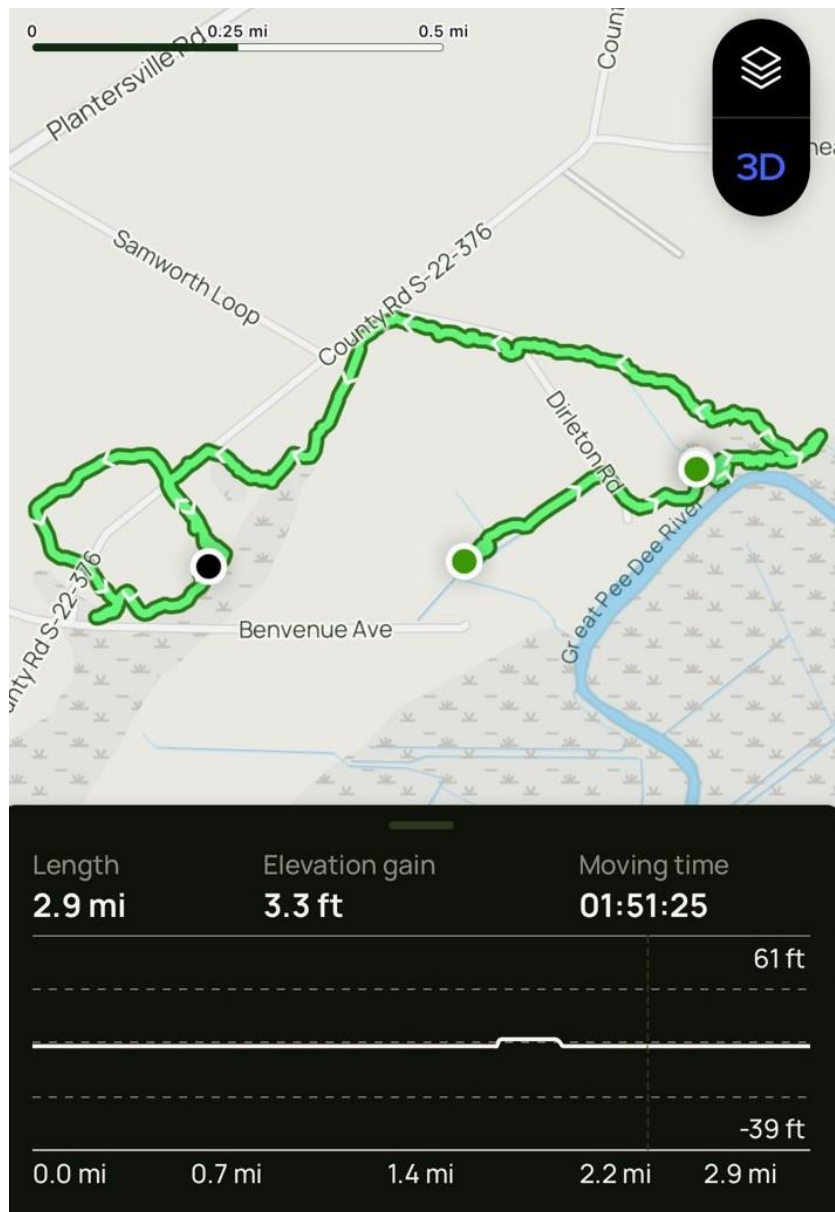
The maps below are of:

- (1) the northern portion of the property,
- (2) the closeup of the area where we will be parking,
- (3) the further zoomed in satellite view of the parking area,
- (4) a rough view of the nature hike, and
- (5) a map of the whole property showing all 13 impoundments.

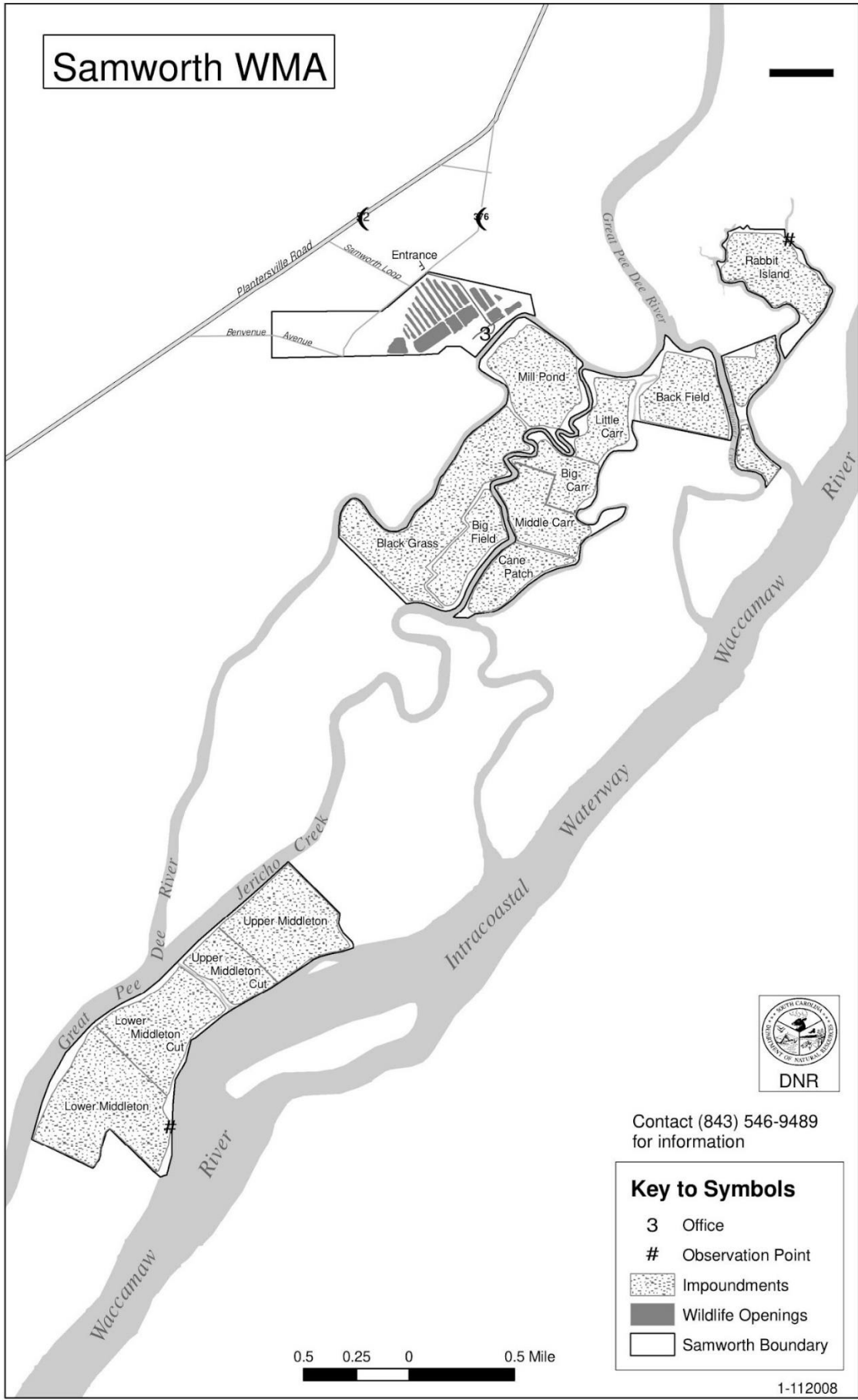
If you have questions or need assistance, please contact:

Todd Johnston, Eastern Regional Director





Samworth WMA



Contact (843) 546-9489 for information

Key to Symbols

- 3 Office
- # Observation Point
- [Stippled Area] Impoundments
- [Dark Grey Area] Wildlife Openings
- [Solid Line] Samworth Boundary

**Devil's Courthouse Overlook
Transylvania Co., NC
August 24, 2024**

This list was produced by SCAN from sightings produced by SCAN members and is subject to revision as needed. An asterisk (*) indicates a new sighting for SCAN. Send any changes or corrections to Kim McManus at scnaturalists76@gmail.com. Please indicate exactly to which flora/fauna list you are referring in the subject line of your message. Thank you.

FLORA

Common Ground-pine
Dendrolycopodium obscurum

Common Running-cedar
Diphasiastrum digitatum

Running Clubmoss
Lycopodium clavatum

Cinnamon Fern
Osmundastrum cinnamomeum

Hay-scented Fern
Sitobolium punctilobulum

Mountain Wood-fern
Dryopteris campyloptera

Fraser Fir
Abies fraseri

Red Spruce
Picea rubens

Eastern White Pine
Pinus strobus

Painted Trillium
Trillidium undulatum

Bluebead-lily
Clintonia borealis

Indian Cucumber-root
Medeola virginiana

Small Green Wood Orchid
Platanthera clavellata

Appalachian Twayblade
Neottia smallii

Canada Mayflower
Maianthemum canadense

Common Rush
Juncus effusus solutus

Tall Buttercup
Ranunculus acris

Appalachian Gooseberry
Ribes rotundifolium

Rock Alumroot
Heuchera villosa

Red Clover
Trifolium pratense

Smooth Serviceberry
Amelanchier laevis

Fire Cherry
Prunus pensylvanica

Eastern Wild Black Cherry
Prunus serotina serotina

Allegheny Blackberry
Rubus allegheniensis

Mountain-cinquefoil
Sibbaldiopsis tridentata

Mountain-ash
Sorbus americana

Yellow Birch
Betula alleghaniensis

White Wood-sorrel
Oxalis montana

Granite Dome St.-John's-wort
Hypericum buckleyi

Mountain St.-John's-wort
Hypericum graveolens

Sweet White Violet
Viola blanda

Silky Willow
Salix sericea

Common Evening-primrose
Oenothera biennis

Eastern Red Maple
Acer rubrum rubrum

Sugar Maple
Acer saccharum

Mountain Maple
Acer spicatum

Yellow Buckeye
Aesculus flava

Longbristle Smartweed
Persicaria longiseta

Smooth Hydrangea
Hydrangea arborescens

Alternate-leaf Dogwood
Swida alternifolia

Galax
Galax urceolata

Trailing Arbutus
Epigaea repens

Indian Pipes
Monotropa uniflora

Mountain Andromeda
Pieris floribunda

Pink Laurel
Rhododendron catawbiense

Minniebush
Rhododendron pilosum

Smooth Highbush Blueberry
Vaccinium corymbosum

Bearberry
Vaccinium erythrocarpum

Appalachian Turtlehead
Chelone lyonii

Self-heal
Prunella vulgaris

Appalachian Mountain-mint
Pycnanthemum montanum

Mountain Holly
Ilex montana

Indian-tobacco
Lobelia inflata

Common White Snakeroot
Ageratina altissima

Blue Ridge Heart-leaved Aster
Eurybia chlorolepis

Purple-node Joe-pye-weed
Eutrochium purpureum purpureum

Cat's-ear
Hypochaeris sp.

Mountain Dwarf-dandelion
Krigia montana

Whorled Aster
Oclemena acuminata

Curtis's Goldenrod
Solidago curtisii

Goldenrod
Solidago sp.

Appalachian Rattlesnake-root
Nabalus cylindricus

Northern Wild Raisin
Viburnum cassinoides

Hobblebush
Viburnum lantanoides

Smooth So. Bush-honeysuckle
Diervilla sessilifolia

Mountain Angelica
Angelica triquinata

FAUNA

Bumblebee
Bombus impatiens

Bumble Flower Beetle
Euphoria inda

Locust Borer
Megacyllene robiniae

Pipeline Swallowtail
Battus philenor

Cloudless Sulphur
Phoebis sennae

Great Spangled Fritillary
Speyeria cybele

Silver-spotted Skipper
Epargyreus clarus

Fiery Skipper
Hylephila phyleus

Rusty Tussock Moth
Orgyia antiqua

Broad-winged Hawk
Buteo platypterus

Ruby-throated Hummingbird
Archilochus colubris

Hairy Woodpecker
Dryobates villosus

Blue Jay
Cyanocitta cristata
Red-breasted Nuthatch
Sitta canadensis
Veery
Catharus fuscescens
Cedar Waxwing
Bombycilla cedrorum
Northern Parula
Setophaga americana
American Goldfinch
Spinus tristis
Eastern Chipmunk
Tamias striatus

NEW SPECIES

Alpine Enchanter's-nightshade
Circaea alpina alpina

Aphrodite Fritillary
Argynnis aphrodite
Appalachian Dodder or Beaked Dodder
Cuscuta rostrata
Blue Ridge Blueberry
Vaccinium altomontanum
Chocolate Milky
Lactarius lignyotus
Downy Goldenrod
Solidago puberula
Drooping Woodreed or Slender Woodreed
Cinna latifolia
Fernald's Bladder Sedge
Carex intumescens fernaldii
Fringed Climbing Buckwheat or Fringed Black Bindweed
Parogonum ciliinode

Northern Roughleaf Goldenrod
Solidago patula
Northern Shorthusk
Brachyelytrum aristosum
Pleated Shaggy Moss
Rhytidiadelphus triquetrus
Pungent Cort or Gassy Webcap or Lilac Conifer Cortinarius
Cortinarius traganus
Salmon Unicorn Entoloma
Entoloma quadratum
Smooth Blue Aster
Symphyotrichum laeve
Spotted Tussock Moth
Lophocampa maculata
Stair-step Moss
Hylocomium splendens

Wolf Mountain Overlook and Vertical Bog
Jackson Co., NC
August 24, 2024

Rough Butt Bald Overlook and Trail
Haywood Co., NC
August 24, 2024

This list was produced by SCAN from sightings produced by SCAN members and is subject to revision as needed. An asterisk (*) indicates a new sighting for SCAN. Send any changes or corrections to Kim McManus at scnaturalists76@gmail.com. Please indicate exactly to which flora/fauna list you are referring in the subject line of your message. Thank you.

LICHENS

Lobaria pulmonaria
Cladonia sp.
Umbilicaria mammulata
Usnea sp.

FLORA

Peat Moss
Sphagnum sp.
Shining Clubmoss
Huperzia lucidula
Common Ground-pine
Dendrolycopodium obscurum
Common Running-cedar
Diphasiastrum digitatum
Running Clubmoss
Lycopodium clavatum
Bluntlobe Grapefern
Sceptridium oneidense

Hay-scented Fern
Sitobolium punctilobulum
New York Fern
Amauropelta noveboracensis
Mountain Wood-fern
Dryopteris campyloptera
Fancy Fern
Dryopteris intermedia
Marginal Wood-fern
Dryopteris marginalis
Common Rockcap Fern
Polypodium virginianum
Fraser Fir
Abies fraseri
Red Spruce
Picea rubens
Jack-in-the-pulpit
Arisaema triphyllum
Sticky Bog Asphodel
Triantha glutinosa
Red Trillium
Trillium erectum
Painted Trillium
Trillidium undulatum
Bluebead-lily
Clintonia borealis
Indian Cucumber-root
Medeola virginiana

Eastern Rose Mandarin
Streptopus lanceolatus lanceolatus
Downy Rattlesnake-orchid
Goodyera pubescens
Small Green Wood Orchid
Platanthera clavellata
Blackberry-lily
Iris domestica
Canada Mayflower
Maianthemum canadense
Common Rush
Juncus effusus solutus
Path Rush
Juncus tenuis
Wood-rush
Luzula sp.
Sedge
Carex sp.
Umbrella-leaf
Diphylleia cymosa
May-apple
Podophyllum peltatum
Mountain Black-cohosh
Actaea podocarpa
Tassel-rue
Trautvetteria carolinensis
Appalachian Gooseberry
Ribes rotundifolium

Cliff Saxifrage
Micranthes petiolaris petiolaris

Red Clover
Trifolium pratense

Smooth Serviceberry
Amelanchier laevis

Wild Strawberry
Fragaria virginiana

Fire Cherry
Prunus pensylvanica

Eastern Wild Black Cherry
Prunus serotina serotina

Allegheny Blackberry
Rubus allegheniensis

Smooth Blackberry
Rubus canadensis

Mountain-ash
Sorbus americana

Wood-nettle
Laportea canadensis

American Beech
Fagus grandifolia

Red Oak
Quercus rubra

Yellow Birch
Betula alleghaniensis

Sweet Birch
Betula lenta lenta

Appalachian Grass-of-Parnassus
Parnassia asarifolia

White Wood-sorrel
Oxalis montana

Granite Dome St.-John's-wort
Hypericum buckleyi

Mountain Bushy St.-John's-wort
Hypericum densiflorum

Mountain St.-John's-wort
Hypericum graveolens

Shrubby St.-John's-wort
Hypericum prolificum

St.-John's-wort
Hypericum sp.

Sweet White Violet
Viola blanda

Gray Willow
Salix cinerea

Upland Willow
Salix humilis

Silky Willow
Salix sericea

Striped Maple
Acer pensylvanicum

Eastern Red Maple
Acer rubrum rubrum

Sugar Maple
Acer saccharum

Mountain Maple
Acer spicatum

Yellow Buckeye
Aesculus flava

Mountain Bittercress
Cardamine clematidis

Bittercress
Cardamine sp.

Roundleaf Sundew
Drosera rotundifolia

Smooth Hydrangea
Hydrangea arborescens

Alternate-leaf Dogwood
Swida alternifolia

Carolina Phlox
Phlox carolina

Pipsissewa
Chimaphila maculata

Trailing Arbutus
Epigaea repens

Mountain Laurel
Kalmia latifolia

Mountain Doghobble
Leucothoe fontanesiana

Indian Pipes
Monotropa uniflora

Mountain Andromeda
Pieris floribunda

Smooth Azalea
Rhododendron arborescens

Pink Laurel
Rhododendron catawbiense

White Rosebay
Rhododendron maximum

Pinkshell Azalea
Rhododendron vaseyi

Minniebush
Rhododendron pilosum

Smooth Highbush Blueberry
Vaccinium corymbosum

Bearberry
Vaccinium erythrocarpum

Longleaf Bluet
Houstonia longifolia

Granite Dome Bluet
Houstonia longifolia glabra

Appalachian Bluet
Houstonia serpyllifolia

Meadow Closed Gentian
Gentiana clausa

Appalachian Turtlehead
Chelone lyonii

Self-heal
Prunella vulgaris

Mountain-mint
Pycnanthemum incanum

Appalachian Mountain-mint
Pycnanthemum montanum

Slenderleaf Agalinis
Agalinis tenuifolia

Beechdrops
Epifagus virginiana

Mountain Holly
Ilex montana

Yarrow
Achillea millefolium

Common White Snakeroot
Ageratina altissima

Common Hairy Coreopsis
Coreopsis pubescens pubescens

Blue Ridge Heart-leaved Aster
Eurybia chlorolepis

Common Heart-leaved Aster
Eurybia divaricata

Hollow-stem Joe-pye-weed
Eutrochium fistulosum

Purple-node Joe-pye-weed
Eutrochium purpureum purpureum

Common Peruvian-daisy
Galinsoga quadriradiata

Leafy Hawkweed
Hieracium paniculatum

Rough Hawkweed
Hieracium scabrum

Mountain Dwarf-dandelion
Krigia montana

Oxeye Daisy
Leucanthemum vulgare

Whorled Aster
Oclemena acuminata

Cutleaf Coneflower
Rudbeckia laciniata

Curtis's Goldenrod
Solidago curtisii

Starved Aster
Symphotrichum lateriflorum

Purple-stem Aster
Symphotrichum puniceum puniceum

Wavyleaf Aster
Symphotrichum undulatum

American Aster
Symphotrichum sp.

Appalachian Rattlesnake-root
Nabalus cylindricus

Red Elderberry
Sambucus racemosa pubens

Northern Wild Raisin
Viburnum cassinoides

Hobblebush
Viburnum lantanoides

Smooth So. Bush-honeysuckle
Diervilla sessilifolia

Mountain Angelica
Angelica triquinata

Cowbane
Oxypolis rigidior

Sanicle
Sanicula canadensis

Green-headed Jelly-club
Leotia viscosa

Ochre Jelly Club
Leotia lubrica

Shiny Cinnamon Polypore
Coltricia cinnamomea

Cleft-foot Amanita
Amanita brunnescens

Amanita
Amanita sp.

Bolete*Boletus* sp.**Old-man-of-the-woods***Strobilomyces floccopus***Ringless Honey Mushroom***Armillariella tabascens***FAUNA****Pocock Lampshade Weaver***Hypochilus pococki***Conical Trashline Orbweaver***Cyclosa conica***Arabesque Orbweaver***Neoscona arabesca***Marbled Orbweaver***Araneus marmoreus***Elongate Stilt Orbweaver***Tetragnatha elongata***Silky Ant***Formica subsericea* (prob.)**Bumblebee***Bombus impatiens***Winter Firefly***Ellychnia corrusca***Locust Borer***Megacyllene robiniae***Pipevine Swallowtail***Battus philenor***Eastern Tiger Swallowtail***Pterourus glaucus***Cabbage White***Pieris rapae***Cloudless Sulphur***Phoebis sennae***Eastern Tailed-blue***Cupido comyntas***Pearl Crescent***Phyciodes tharos***American Lady***Vanessa virginiensis***Red Admiral***Vanessa atalanta***Common Buckeye***Junonia coenia***Red-spotted Purple***Limenitis arthemis astyanax***Silver-spotted Skipper***Epargyreus clarus***Horace's Duskywing***Erynnis horatius***Clouded Skipper***Lerema accius***Fiery Skipper***Hylephila phyleus***Sachem***Atalopedes campestris***Seal Salamander***Desmognathus monticola***Broad-winged Hawk***Buteo platypterus***Eastern Wood-pewee***Contopus virens***Blue Jay***Cyanocitta cristata***American Crow***Corvus brachyrhynchos***Carolina Chickadee***Poecile carolinensis***Red-breasted Nuthatch***Sitta canadensis***Golden-crowned Kinglet***Regulus satrapa***Cedar Waxwing***Bombycilla cedrorum***Black-throated Blue Warbler***Setophaga caerulescens***Eastern Towhee***Pipilo erythrophthalmus***Dark-eyed Junco***Junco hyemalis***Red Squirrel***Tamiasciurus hudsonicus***NEW SPECIES****Aphrodite Fritillary***Argynnis Aphrodite***Appalachian Dodder***Cuscuta rostrata***Appalachian Penny Moss***Rhizomnium appalachianum***Blackening Russula***Russula albonigra***Blue Marsh Violet***Viola cucullata***Blue Ridge Blueberry***Vaccinium altomontanum***Blue Ridge Cutleaf Coneflower***Rudbeckia laciniata humilis***Canada Burnet or American Burnet or White Burnet***Sanguisorba canadensis***Canada St. John's-wort***Hypericum canadense***Chocolate Milky***Lactarius lignyotus***Clasping Twistedstalk***Streptopus amplexifolius***Clingman's Hedgenettle***Stachys clingmanii***Cronquist's Goldenrod***Solidago rugosa cronquistiana***Decorated Mop***Tricholomopsis decora***Depressed Hedgehog Mushroom***Hydnum umbilicatum***Downy Goldenrod***Solidago puberula***Eastern Hemlock Looper***Lambdina fiscellaria fiscellaria***Eastern Ninebark***Physocarpus opulifolius opulifolius***Fernald's Bladder Sedge***Carex intumescens fernaldii***Fringed Climbing Buckwheat or****Fringed Black Bindweed***Parogonum ciliinode***Goldenrod Hooded Owllet or****Asteroid Moth***Cucullia asteroides***Harper's Sedge***Carex leptalea harperi***Meadow Spittlebug or Meadow****Frogopper***Philaenus spumarius***Mountain Purple Turtlehead or****Erwin's Turtlehead***Chelone obliqua erwiniae***Mouse-ear Hawkweed***Pilosella* sp.**Narrow-panicked Rush or Short-tailed Rush***Juncus tweedyi***Northern Maleberry***Lyonia ligustrina ligustrina***Northern Roughleaf Goldenrod***Solidago patula***Northern Shorthusk***Brachyelytrum aristosum***Northern Water-Horehound***Lycopus uniflorus***Parnassia Miner Bee***Andrena parnassiae***Plain-tailed Hanging Thief***Diogmites neoternatus***Pleated Shaggy Moss***Rhytidiadelphus triquetrus***Prickly Bog Sedge***Carex Atlantic***Shaggy Scalycap***Pholiota squarrosa***Sharp-scaly Pholiota***Pholiota squarrosoides***Slender Mannagrass or Melic****Mannagrass***Glyceria melicaria***Spotted Joe-pye-weed***Eutrochium maculatum maculatum***Southern Blackbelly Salamander***Desmognathus amphileucus***Sumo Mite***Allothrombium* sp.**The Sickener***Russala emetica***Wild White Violet***Viola minuscula***Wrinkled Psathyrella***Typhrasa gossypina*